



Product Selection Guide

SE58T14 Applications & Features

Appearance:

- 1.Shell Color: Black.
- 2.Surface Treatment: Dye black、Sandblast Oxidation (Optional) .
- 3.Termination: Radial Output.
- 4.Cable Length: 1m (Can be customized) .
- 5.Color of Cable: Black、Gray (Optional) .

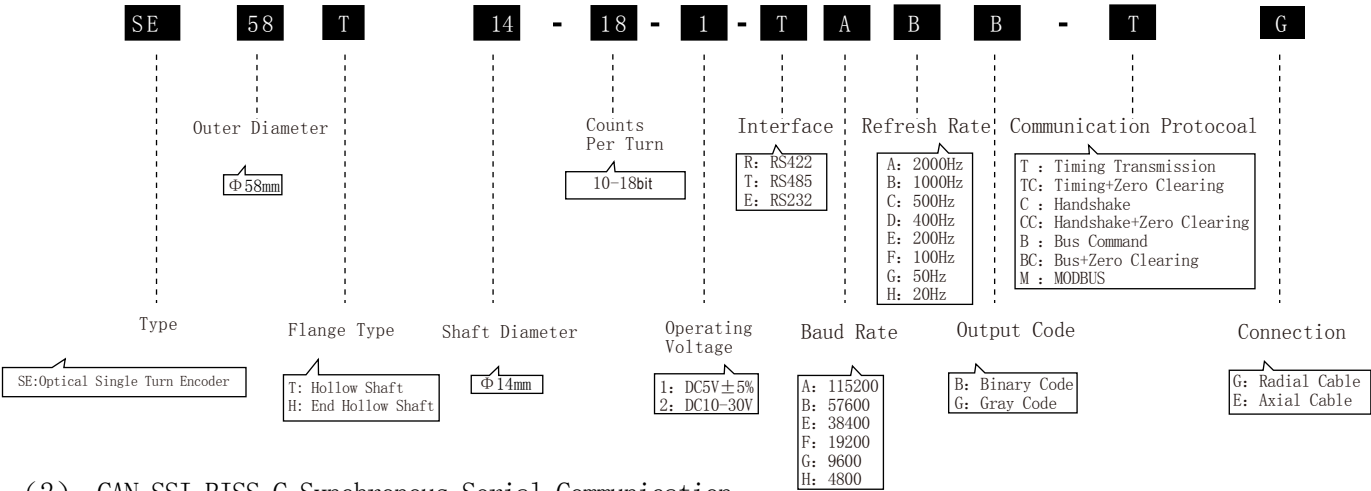
Features:

- 1.Widely used in the industrial sector, is a versatile economy encoder products.
- 2.It can achieve a variety of communication protocols.
- 3.Wide temperature range, suitable for all kinds of environments.
- 4.Waterproof design optimization, durable, long life, anti-interference.

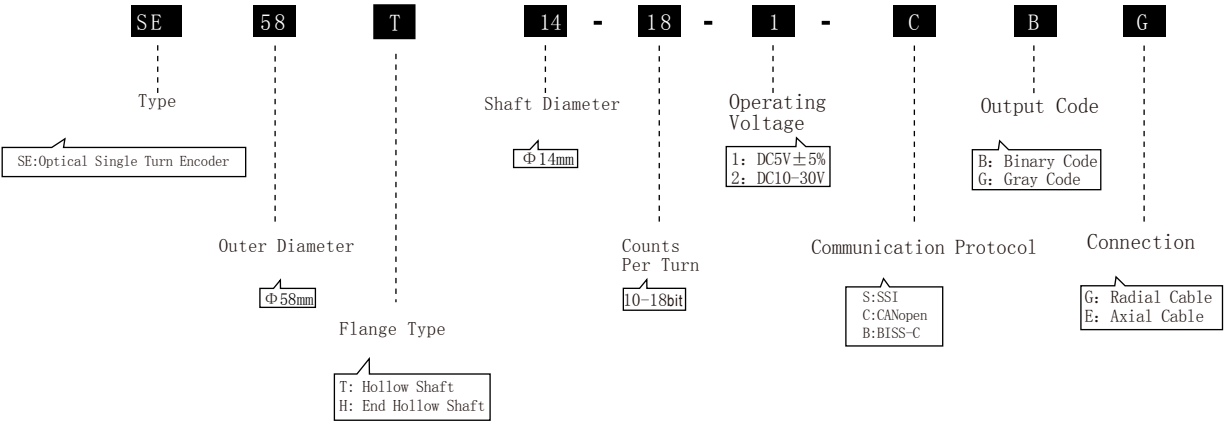


1.1 Part Number Defined

(1) Asynchronous Serial Communication



(2) CAN.SSI.BISS-C Synchronous Serial Communication



1.2 Notes

- 1.Please follow the instructions to use flexible connections for mounting to ensure the accuracy and service life of products.
- 2.Encoders are precise instruments adjusted strictly before leaving factory. Strong impact, dismantlement and changes on encoders are not allowed.
- 3.To guarantee the accuracy and work of encoder, when the operating voltage is DC5V ± 5%:
 - (1) Cable length should not exceed 2 meters.
 - (2) The current of the power supply should not be less than 0.5A.
 - (3) The interference signal of the power supply should be within ± 50mV.When operating voltage is 10-30V:
 - (1) The current of the power supply should not be less than 0.3A.
 - (2) The interference signal of the power supply should be within ± 50mV.
- 4.The corresponding supply voltage and connections to the equipment should be paid attention by the profesional installation people.
- 5.Please read the instructions carefully before using the product.

2.1 Basic Specifications

| Resolution in Bit | | 10~18bit | | | | Measuring Range | | 0 ~ 360° (Single-turn) | | | | |
|--------------------|--------|----------|--------|--------|--------|-----------------|--------|------------------------|-------|--|--|--|
| Resolution in Bit | 10 bit | 11 bit | 12 bit | 13 bit | 14 bit | 15 bit | 16 bit | 17bit | 18bit | | | |
| Angular Resolution | | | 320" | 160" | 80" | 40" | 20" | 10" | 5" | | | |
| Accuracy≤ | | | ±640" | ±320" | ±160" | ±80" | ±40" | ±20" | ±15" | | | |

2.2 Environment Specifications

| | | | |
|---------------------|-----------|------------------|------|
| Working Temperature | -40℃~+65℃ | Protection Class | IP54 |
| Storage Temperature | -50℃~+70℃ | | |

2.3 Mechanical Specifications

| | | | |
|----------------|-------|-------------------|------------|
| Outer Diameter | 58 mm | Shaft Diameter | 14 mm |
| Height | 51 mm | Shaft Length | |
| Weight | 270 g | Max Speed | 2000 r/min |
| Vibration | 5 g | Radial Shaft Load | ≤30N |
| Shock | 20 g | Axial Shaft Load | ≤20N |

2.4 Electrical Specifications

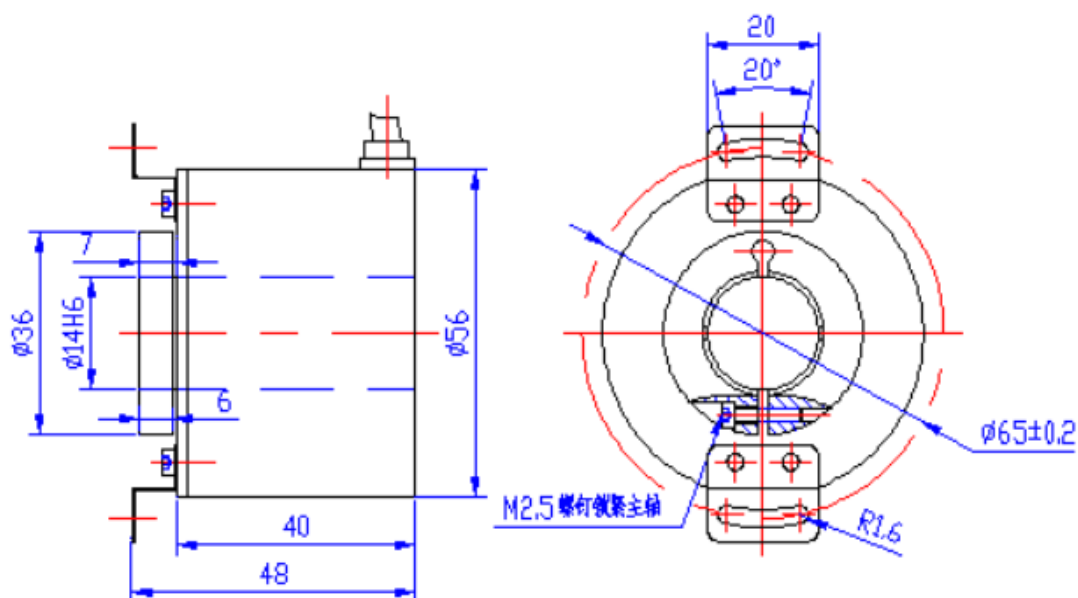
(1) Asynchronous Serial Communication

| | |
|------------------------|--|
| Supply Voltage | DC5V, 10~30V |
| Interface | RS485、RS422、RS232、CAN |
| Communication Protocol | MODBUS、CANopen、Timing Transmission、Timing Transmission+Zero Clearing、Handshake、Handshake+Zero Clearing、Bus Command、Bus+Zero Clearing |
| Baud Rate(b/s) | 115200、57600、38400、19200、9600、4800、2400 |
| Refresh Rate | 2000Hz、1000Hz、500 Hz、400 Hz、200 Hz、100 Hz、50 Hz、20 Hz |
| Output Code | Binary Code、Gray Code |

(2) Synchronous Serial Communication

| | |
|------------------------|------------------------|
| Supply Voltage | DC5V, 10~30V |
| Communication Protocol | SSI、BISS-C |
| Output Code | Binary Code, Gray Code |

2.5 Installation Instruction





TEL:86-0431-81857464

Skype:zhangpaula312

WhatsApp:+86 13804324526

Email:paulazhang@san-sheng.net



SANSHENG
SENSOR

JILIN SANSHENG SENSING TECHNOLOGY CO,LTD

No 191,Chaoqun Street, High-tech Development District,
Changchun 130012, China.