



Product Selection Guide

SE165T60 Applications & Features

Appearance:

- 1.Shell Color: Black、 Silver (Optional) .
- 2.Surface Treatment: Sandblast Oxidation.
- 3.Termination: Radial Output.
- 4.Cable Length: 1m (Can be customized) .
- 5.Color of Cable: Black、 Gray (Optional) .

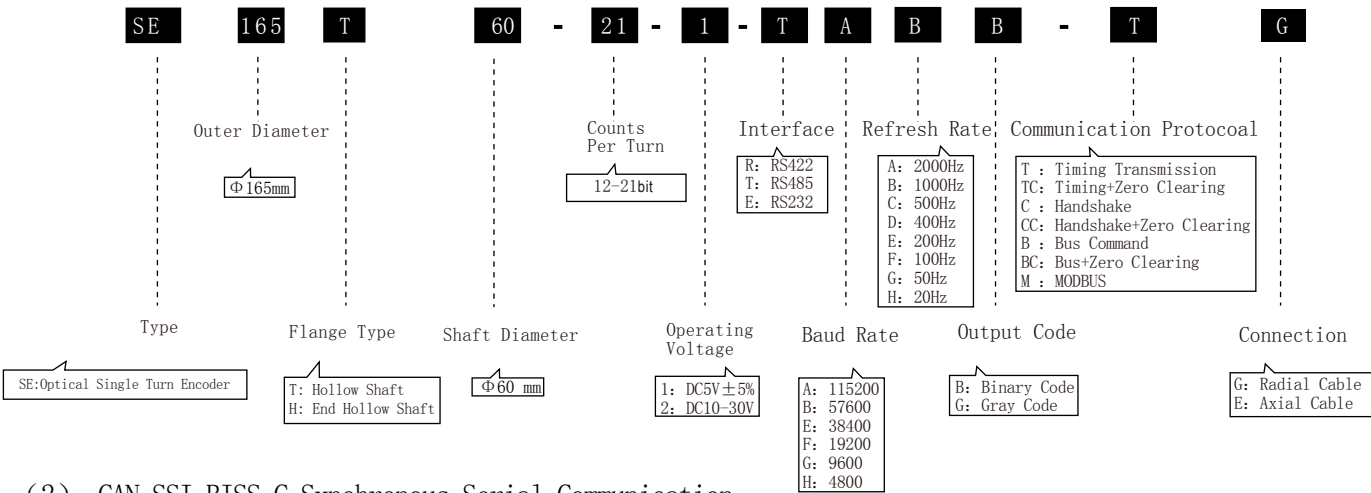
Features:

- 1.Large hollow shaft diameter products, military standards.
- 2.Durable, long life, high precision, anti-interference.
- 3.Wide temperature range, suitable for all kinds of environments.

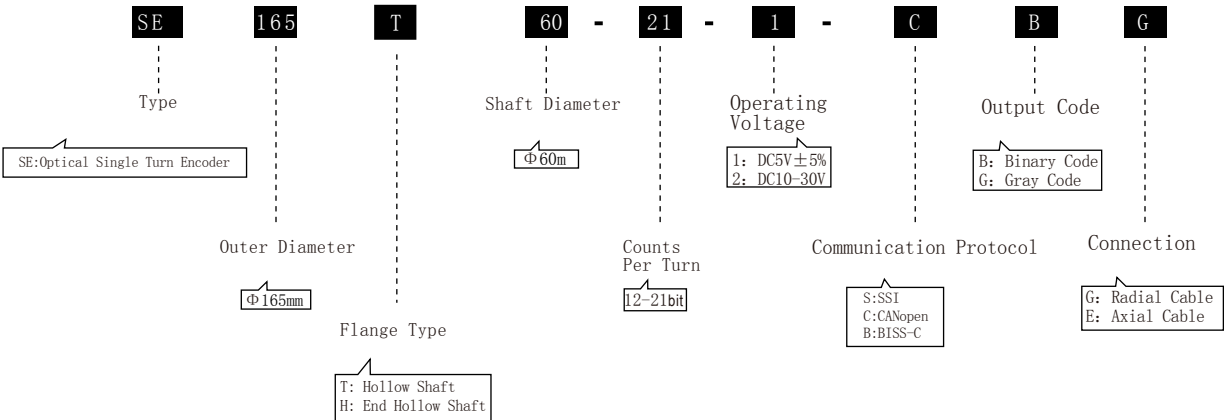


1.1 Part Number Defined

(1) Asynchronous Serial Communication



(2) CAN.SSI.BISS-C Synchronous Serial Communication



1.2 Notes

- 1.Please follow the instructions to use flexible connections for mounting to ensure the accuracy and service life of products.
- 2.Encoders are precise instruments adjusted strictly before leaving factory. Strong impact, dismantlement and changes on encoders are not allowed.
- 3.To guarantee the accuracy and work of encoder, when the operating voltage is DC5V \pm 5%:
 - (1) Cable length should not exceed 2 meters.
 - (2) The current of the power supply should not be less than 0.5A.
 - (3) The interference signal of the power supply should be within \pm 50mV.
- When operating voltage is 10-30V:
 - (1) The current of the power supply should not be less than 0.3A.
 - (2) The interference signal of the power supply should be within \pm 50mV.
- 4.The corresponding supply voltage and connections to the equipment should be paid attention by the professional installation people.
- 5.Please read the instructions carefully before using the product.

2.1 Basic Specifications

Resolution in Bit		18~22bit				Measuring Range		0 ~ 360° (Single-turn)				
Resolution in Bit	11 bit	12 bit	13 bit	14 bit	15 bit	16 bit	17bit	18 bit	19 bit	20bit	21bit	22bit
Angular Resolution		320"	160"	80"	40"	20"	10"	5"	2.5"	1.2"	0.6"	0.3"
Accuracy≤		±640"	±320"	±160"	±80"	±40"	±20"	±15"	±7.5"	±6"	±3"	±2.5"

2.2 Environment Specifications

Working Temperature	-40℃~+65℃	Protection Class	IP54
Storage Temperature	-50℃~+70℃		

2.3 Mechanical Specifications

Outer Diameter	165mm	Shaft Diameter	60mm
Height	48 mm	Shaft Length	
Weight	2350g	Max Speed	600 r/min
Vibration	5 g	Radial Shaft Load	≤60N
Shock	20 g	Axial Shaft Load	≤40N

2.4 Electrical Specifications

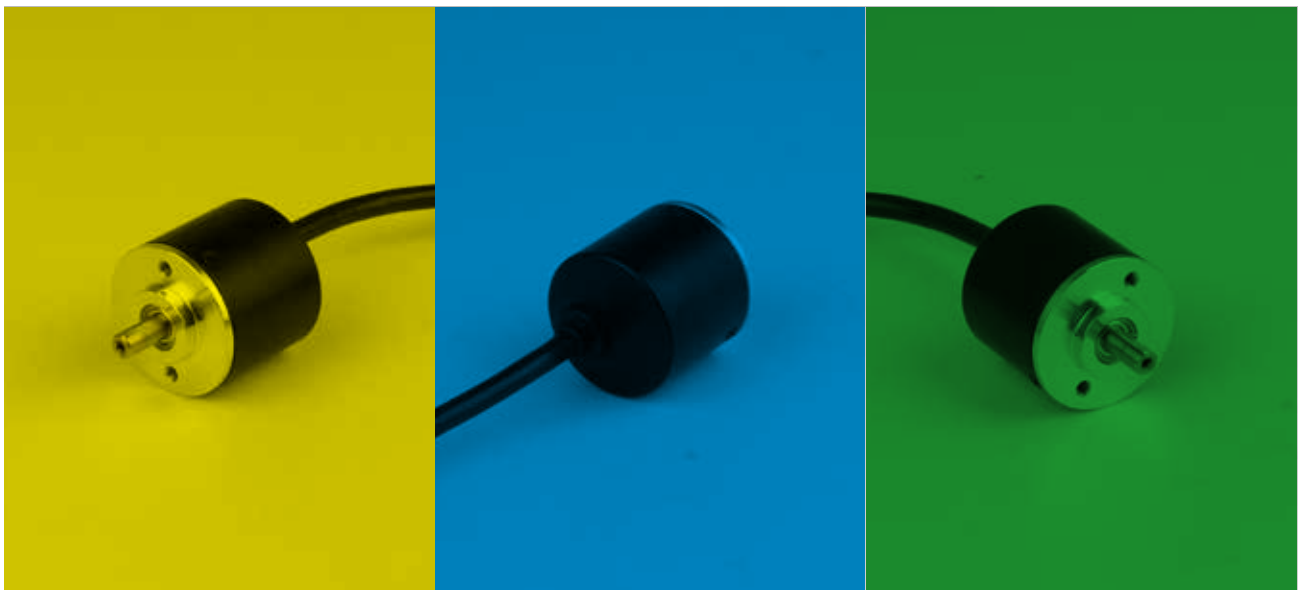
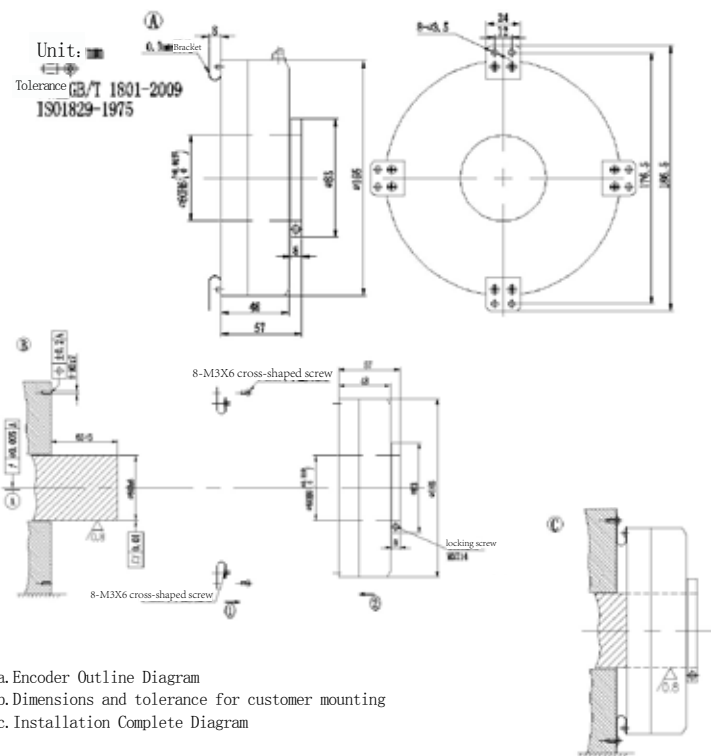
(1) Asynchronous Serial Communication

Supply Voltage	DC5V, 10~30V
Interface	RS485、RS422、RS232、CAN
Communication Protocol	MODBUS、CANopen、Timing Transmission、Timing Transmission+Zero Clearing、Handshake、Handshake+Zero Clearing、Bus Command、Bus+Zero Clearing
Baud Rate(b/s)	115200、57600、38400、19200、9600、4800、2400
Refresh Rate	2000Hz、1000Hz、500 Hz、400 Hz、200 Hz、100 Hz、50 Hz、20 Hz
Output Code	Binary Code, Gray Code

(2) Synchronous Serial Communication

Supply Voltage	DC5V, 10~30V
Communication Protocol	SSI、BISS-C
Output Code	Binary Code, Gray Code

2.5 Installation Instruction



TEL:86-0431-81857464

Skype:zhangpaula312

WhatsApp:+86 13804324526

Email: paulazhang@san-sheng.net



JILIN SANSHENG SENSING TECHNOLOGY CO.,LTD

No 191,Chaoqun Street, High-tech Development District,
Changchun 130012,China.